



# CaMKI $\beta$ Polyclonal Antibody

<b>Catalog No</b>	YP-Ab-14691
<b>Isotype</b>	IgG
<b>Reactivity</b>	Human;Mouse;Rat
<b>Applications</b>	WB;IHC;IF;ELISA
<b>Gene Name</b>	PNCK
<b>Protein Name</b>	Calcium/calmodulin-dependent protein kinase type 1B
<b>Immunogen</b>	The antiserum was produced against synthesized peptide derived from human CaMK1-beta. AA range:161-210
<b>Specificity</b>	CaMKI $\beta$ Polyclonal Antibody detects endogenous levels of CaMKI $\beta$ protein.
<b>Formulation</b>	Liquid in PBS containing 50% glycerol, 0.5% BSA and 0.02% sodium azide.
<b>Source</b>	Polyclonal, Rabbit,IgG
<b>Purification</b>	The antibody was affinity-purified from rabbit antiserum by affinity-chromatography using epitope-specific immunogen.
<b>Dilution</b>	WB: 1/500 - 1/2000. IHC: 1/100 - 1/300. ELISA: 1/10000.. IF 1:50-200
<b>Concentration</b>	1 mg/ml
<b>Purity</b>	$\geq 90\%$
<b>Storage Stability</b>	-20°C/1 year
<b>Synonyms</b>	PNCK; Calcium/calmodulin-dependent protein kinase type 1B; CaM kinase I beta; CaM kinase IB; CaM-KI beta; CaMKI-beta; Pregnancy up-regulated non-ubiquitously-expressed CaM kinase
<b>Observed Band</b>	38kD
<b>Cell Pathway</b>	Cytoplasm . Nucleus .
<b>Tissue Specificity</b>	Brain,Liver,Placenta,Thalamus,
<b>Function</b>	catalytic activity:ATP + a protein = ADP + a phosphoprotein.,enzyme regulation:Activated by Ca(2+)/calmodulin.,function:Calcium/calmodulin-dependent protein kinase belonging to a proposed calcium-triggered signaling cascade. In vitro phosphorylates CREB1 and SYN1/synapsin I. Phosphorylates and activates CAMK1.,PTM:Phosphorylated by CAMKK1.,similarity:Belongs to the protein kinase superfamily.,similarity:Belongs to the protein kinase superfamily. CAMK Ser/Thr protein kinase family. CaMK subfamily.,similarity:Contains 1 protein kinase domain.,
<b>Background</b>	PNCK is a member of the calcium/calmodulin-dependent protein kinase family of protein serine/threonine kinases (see CAMK1; MIM 604998) (Gardner et al., 2000 [PubMed 10673339]).[supplied by OMIM, Mar 2008],



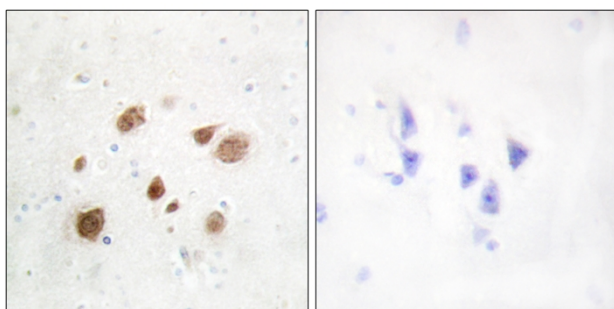
**matters needing attention**

Avoid repeated freezing and thawing!

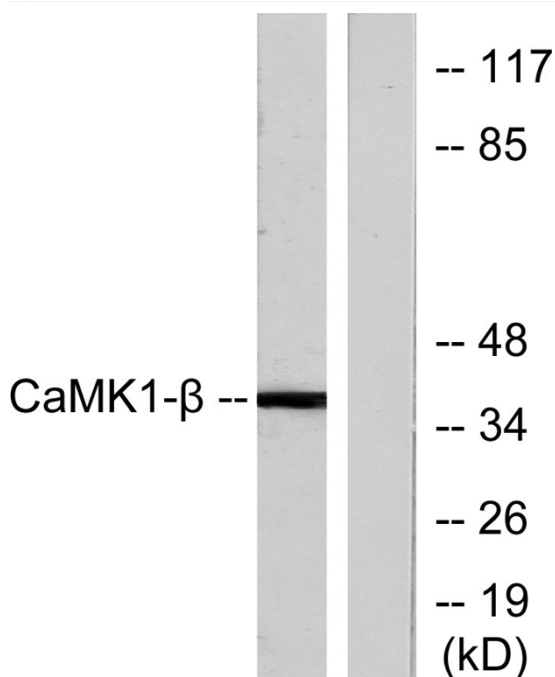
**Usage suggestions**

This product can be used in immunological reaction related experiments. For more information, please consult technical personnel.

**Products Images**



Immunohistochemistry analysis of paraffin-embedded human brain tissue, using CaMK1-beta Antibody. The picture on the right is blocked with the synthesized peptide.



Western blot analysis of lysates from LOVO cells, treated with H<sub>2</sub>O<sub>2</sub> 100uM 30', using CaMK1-beta Antibody. The lane on the right is blocked with the synthesized peptide.